

# Suburb Profile Report



## Panorama SA 5041

Prepared on: 09 August 2019

Prepared by: Christos Raptis

Phone: 0407 836 954

Email: [christos@raptisrealestate.com.au](mailto:christos@raptisrealestate.com.au)

## PANORAMA


**7.9km**

Distance from GPO


**2.3k**

Population

**↑3.4%**

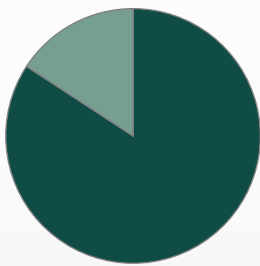
5 year population change



-

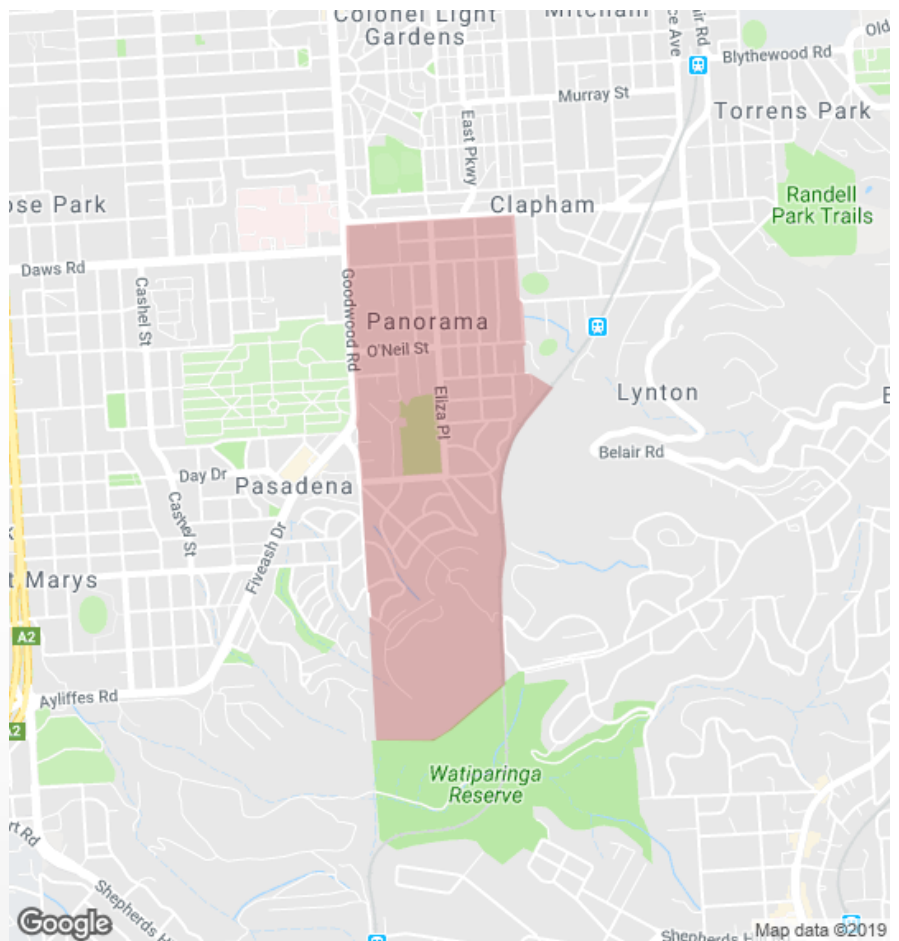
Average length of ownership

16%



84%

 Owner Occupiers

 Renters


The size of Panorama is approximately 1.7 square kilometres. It has 6 parks covering nearly 6% of total area. The population of Panorama in 2011 was 2,259 people. By 2016 the population was 2,336 showing a population growth of 3.4% in the area during that time. The predominant age group in Panorama is 50-59 years. Households in Panorama are primarily couples with children and are likely to be repaying \$1800 - \$2399 per month on mortgage repayments. In general, people in Panorama work in a professional occupation. In 2011, 80.5% of the homes in Panorama were owner-occupied compared with 81.2% in 2016. Currently the median sales price of houses in the area is \$605,000.



Total dwellings



Total new listings\*



Median Value

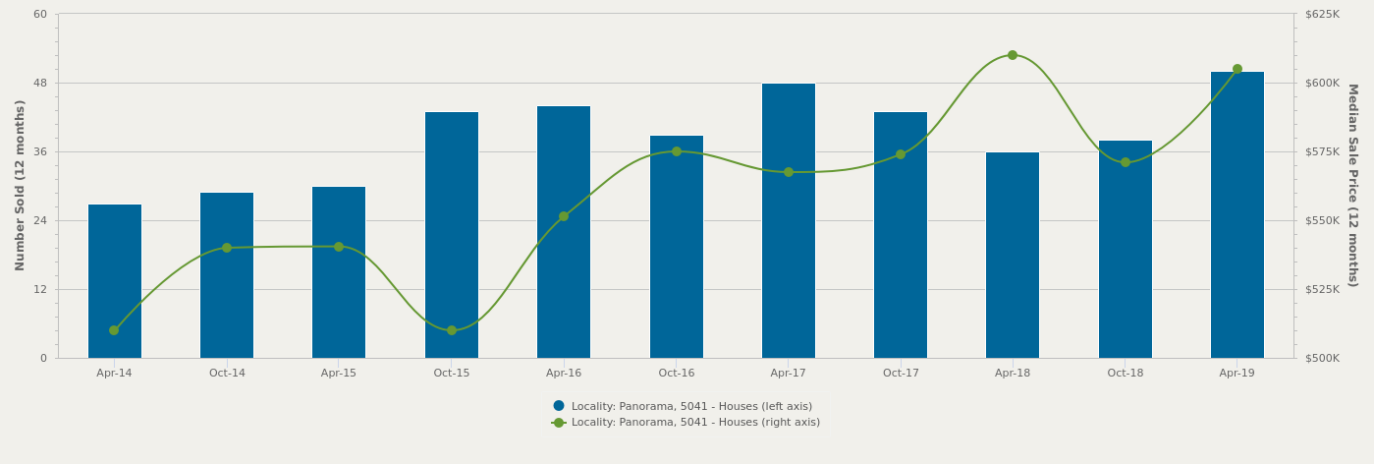
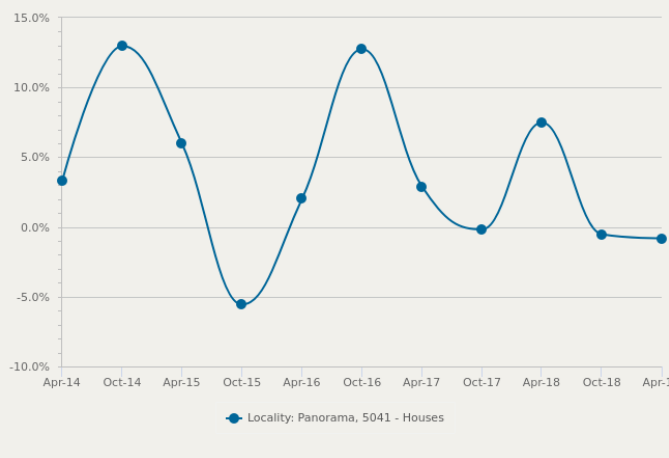
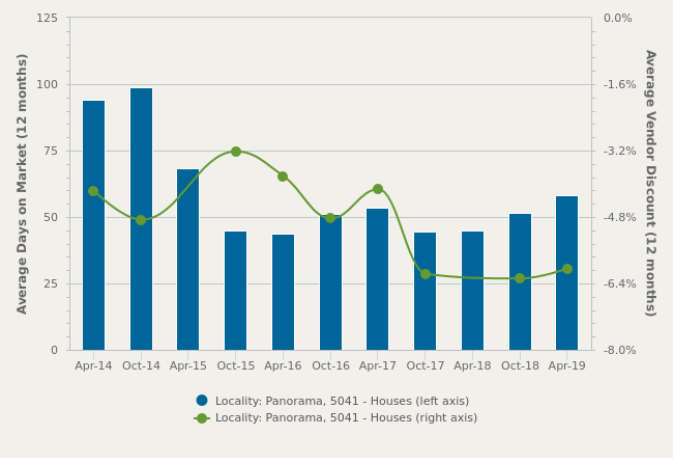


Total number currently listed


**898**
**64**
**\$573,986**
**5**

**42**
**1**
**-**
**0**

\*Total number of unique properties listed for sale over the past 12 months.


**HOUSES: FOR SALE**
**Number Sold vs. Median Sale Price**

**Change in Median Price**

**Average Days on Market vs. Average Vendor Discount**

**\$\$\$**

Upper Quartile Price\*

**\$716,000**

The 75th percentile sale price of sales over the past 12 months within the suburb.

**\$\$**

Median Price\*

**\$605,000**

The middle sale price of all transactions recorded over the past 12 months within the suburb. Note that sale prices lower than \$10,000 and higher than \$80,000,000 are excluded from the analysis.

**\$**

Lower Quartile Price\*

**\$535,000**

The 25th percentile sale price of sales over the past 12 months within the suburb.

\*Statistics are calculated over a rolling 12 month period




**HOUSES: MARKET ACTIVITY SNAPSHOT**
**ON THE MARKET**
 **0**
 **2**  
**BEDROOMS**

There are no 2 bedroom Houses on the market in this suburb

**RECENTLY SOLD**
 **2**

**10 Lawn Street Panorama SA 5041**

 Sold on 09 Jul 2019  
**\$442,000**
 **2**
 **1**
 **742m<sup>2</sup>**

**10 Lawn Street Panorama SA 5041**

 Sold on 25 May 2019  
**\$442,000\***
 **1**
 **1**
 **758m<sup>2</sup>**
 **5**
 **3**  
**BEDROOMS**
 **9**

**16 Vancouver Avenue Panorama SA 5041**

 Listed on 02 Aug 2019  
**\$490,000**
 **2**
 **1**
 **676m<sup>2</sup>**

**3 Hillrise Road Panorama SA 5041**

 Listed on 29 Jul 2019  
**\$550,000-\$600,000**
 **4**
 **1**
 **844m<sup>2</sup>**

**1 Delta Crescent Panorama SA 5041**

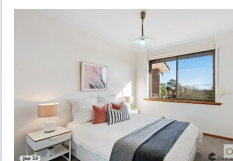
 Sold on 19 Jul 2019  
**\$592,250\***
 **3**
 **2**
 **782m<sup>2</sup>**

**2A Lyall Avenue Panorama SA 5041**

 Sold on 04 Jul 2019  
**\$430,000\***
 **1**
 **1**
 **430m<sup>2</sup>**
 **0**
 **4**  
**BEDROOMS**
 **10**

There are no 4 bedroom Houses on the market in this suburb


**13 Stone Street Panorama SA 5041**

 Sold on 23 Jul 2019  
**\$610,000\***
 **2**
 **2**
 **935m<sup>2</sup>**

**13 Hillview Avenue Panorama SA 5041**

 Sold on 12 Jul 2019  
 Not Disclosed

 **2**
 **3**
 **657m<sup>2</sup>**

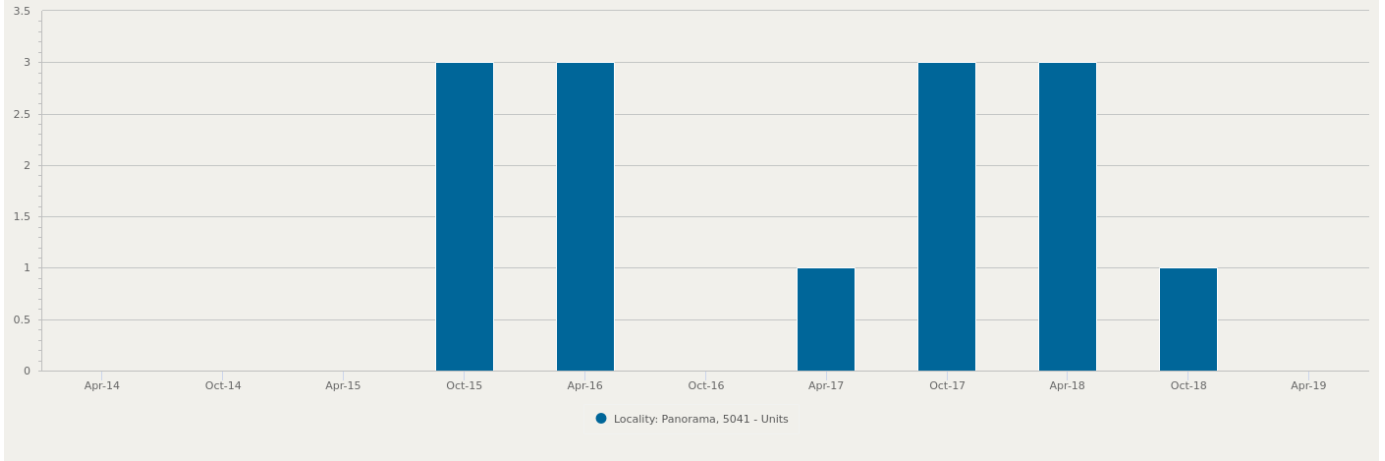

= number of houses currently On the Market or Sold within the last 6 months

\*Agent advised



**UNITS: FOR SALE**

Number Sold vs. Median Sale Price




**UNITS: MARKET ACTIVITY SNAPSHOT**
**ON THE MARKET**
**RECENTLY SOLD**
 **0**
 **1**  
**BEDROOMS**
 **0**

There are no 1 bedroom Units on the market in this suburb

There are no recently sold 1 bedroom Units in this suburb

 **0**
 **2**  
**BEDROOMS**
 **0**

There are no 2 bedroom Units on the market in this suburb

There are no recently sold 2 bedroom Units in this suburb

 **0**
 **3**  
**BEDROOMS**
 **0**

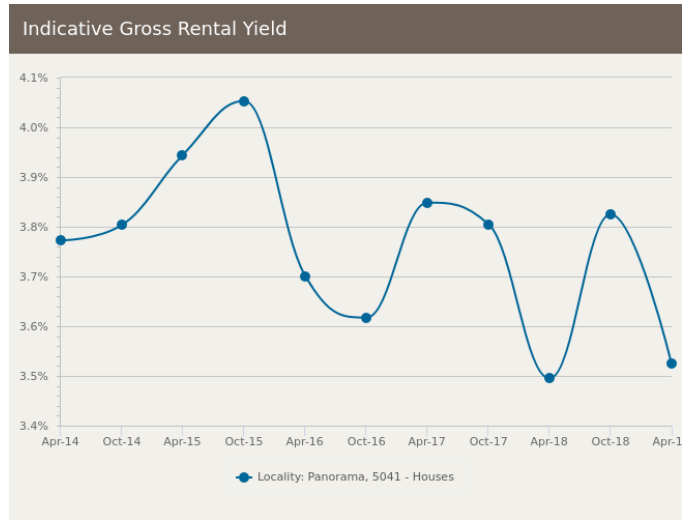
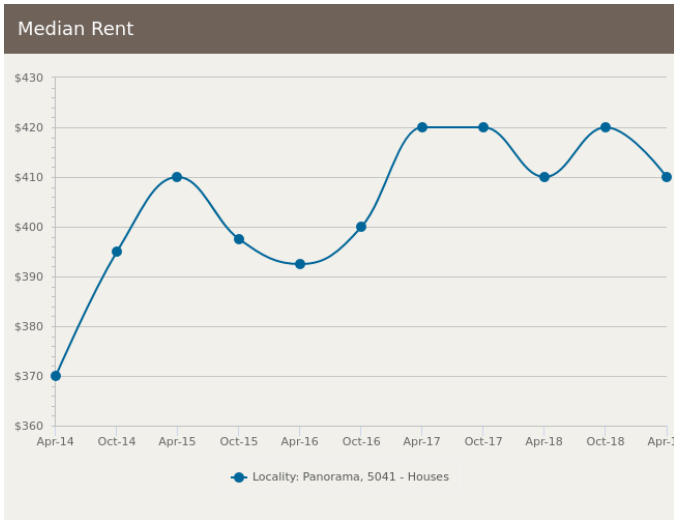
There are no 3 bedroom Units on the market in this suburb

There are no recently sold 3 bedroom Units in this suburb



= number of units currently On the Market or Sold within the last 6 months

## HOUSES: FOR RENT



## HOUSES: RENTAL ACTIVITY SNAPSHOT

FOR RENT

0

2  
BEDROOMS

There are no 2 bedroom Houses for rent in this suburb

3

3  
BEDROOMS

**54 Eliza Place Panorama SA 5041**  
Listed on 07 Aug 2019  
\$385/W

- 4
- 1
- 744m<sup>2</sup>

**30 Moriane Avenue Panorama SA 5041**  
Listed on 06 Aug 2019  
\$460/W

- 4
- 1
- 855m<sup>2</sup>

1

4  
BEDROOMS

**2A Eliza Place Panorama SA 5041**  
Listed on 26 Jul 2019  
\$450/W

- 1
- 2
- 314m<sup>2</sup>



= number of houses observed as On the Market for Rent within the last month



## UNITS: RENTAL ACTIVITY SNAPSHOT

FOR RENT

 0

 1  
BEDROOMS

There are no 1 bedroom Units for rent in this suburb

 1

 2  
BEDROOMS



**1/31 Eliza Place Panorama SA 5041**

Listed on 29 Jul 2019  
\$320/W

 2

 1

 322m<sup>2</sup>

 0

 3  
BEDROOMS

There are no 3 bedroom Units for rent in this suburb



= number of units observed as On the Market for Rent within the last month



## ► DISCLAIMER

### CoreLogic Disclaimer

Whilst all reasonable effort is made to ensure the information in this publication is current, CoreLogic does not warrant the accuracy or completeness of the data and information contained in this publication and to the full extent not prohibited by law excludes all for any loss or damage arising in connection with the data and information contained in this publication.

The listing prices shown represent the first and last listing price CoreLogic recorded in the advertising campaign for the property. In some instances we may have derived the price from the advertisement text. Where we have been unable to derive the price from the advertisement text (for example "Auctions"), the discount calculations will be unavailable.

Census statistics are provided by the Australian Bureau of Statistics (ABS) available at <http://www.abs.gov.au/> under Creative Commons Attribution 2.5 (<http://creativecommons.org/licenses/by/2.5/au/legalcode>).

### State Government Copyright Notice and Disclaimer

SA - © 2019 Copyright in this information belongs to the South Australian Government and the South Australian Government does not accept any responsibility for the accuracy or completeness of the information or its suitability for purpose.

### Publisher

RP Data Pty Ltd trading as CoreLogic Asia Pacific  
ABN 67 087 759 171  
P: 1300 734 318  
E: [support@corelogic.com.au](mailto:support@corelogic.com.au)